

# BIRMINGHAM LOCALS

- DEPOT ADDRESS: 1400 NORFOLK SOUTHERN DR IRONDALE, AL  
35210

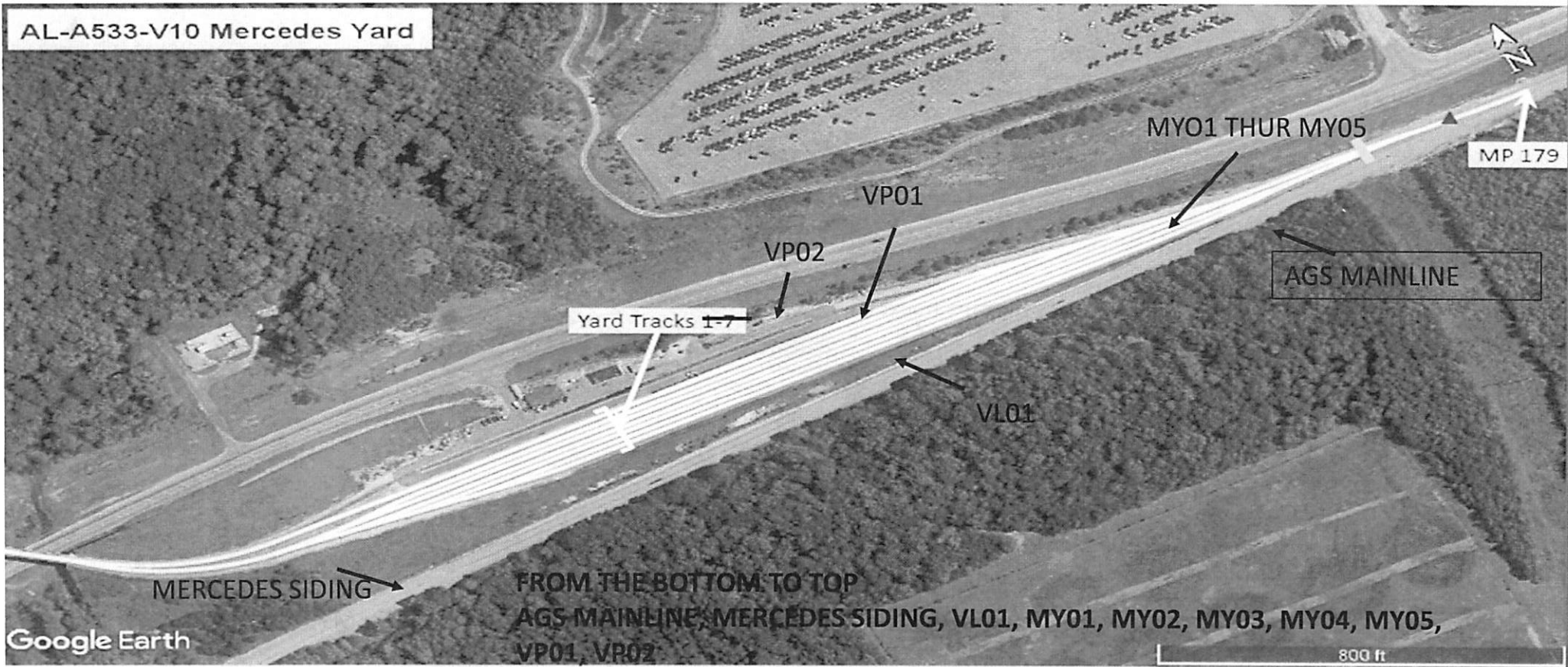
LOCAL YARD MAPS  
AND  
STORAGE TRACKS

AL-A533-V10 Overview



▲ = Derailed	▬ = Industry Gate	○ = Close Clearance	▬ = Lead Line	▬ = Industry Track
For Reference Only				

AL-A533-V10 Mercedes Yard

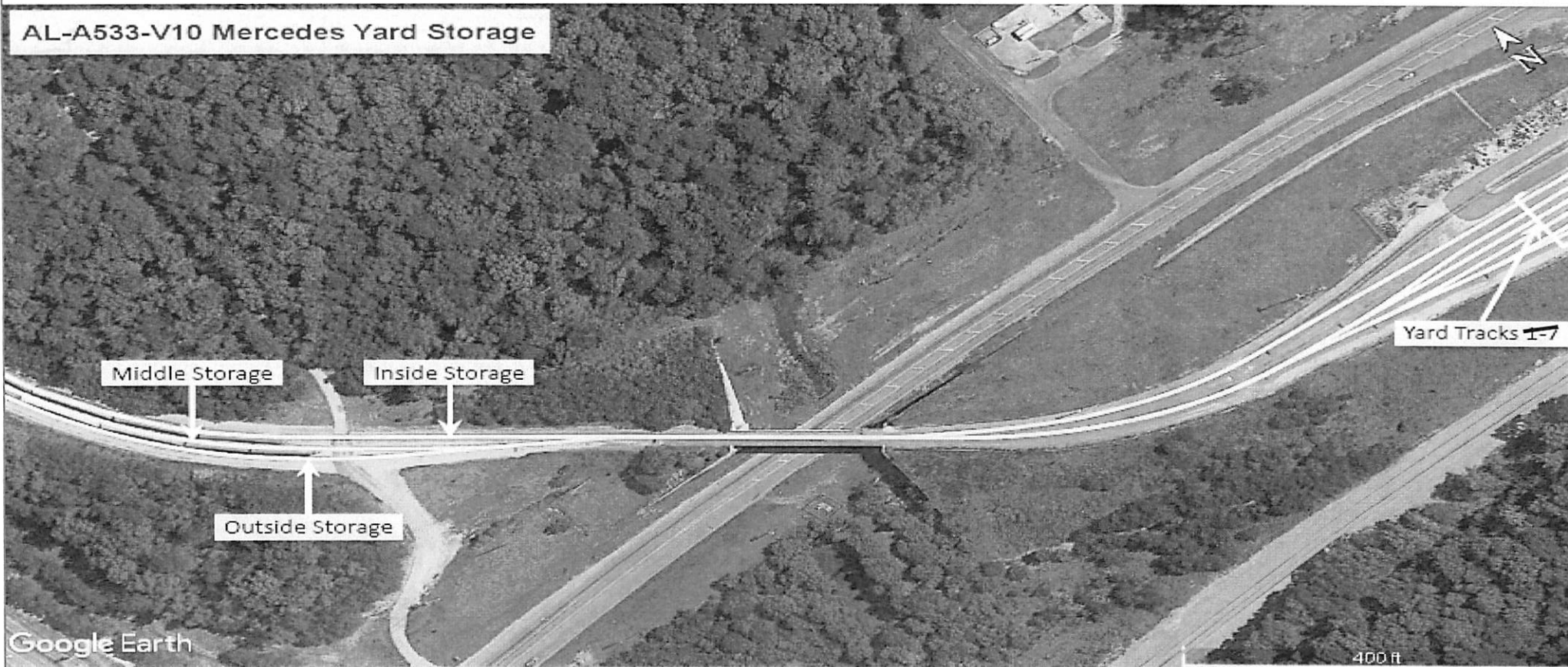


Google Earth

FROM THE BOTTOM TO TOP  
 AGS MAINLINE, MERCEDES SIDING, VL01, MY01, MY02, MY03, MY04, MY05,  
 VP01, VP02

= Deraill	= Industry Gate	= Close Clearance	= Lead Line	= Industry Track
For Reference Only				

AL-A533-V10 Mercedes Yard Storage



▲ = Derrail	■ = Industry Gate	○ = Close Clearance	= Lead Line	▬ = Industry Track
For Reference Only				



**Division:** Alabama Division

**Control Station:** A533

**Class Code:**

**Industry Name:** Big Pocket

**Version:** January 17, 2018

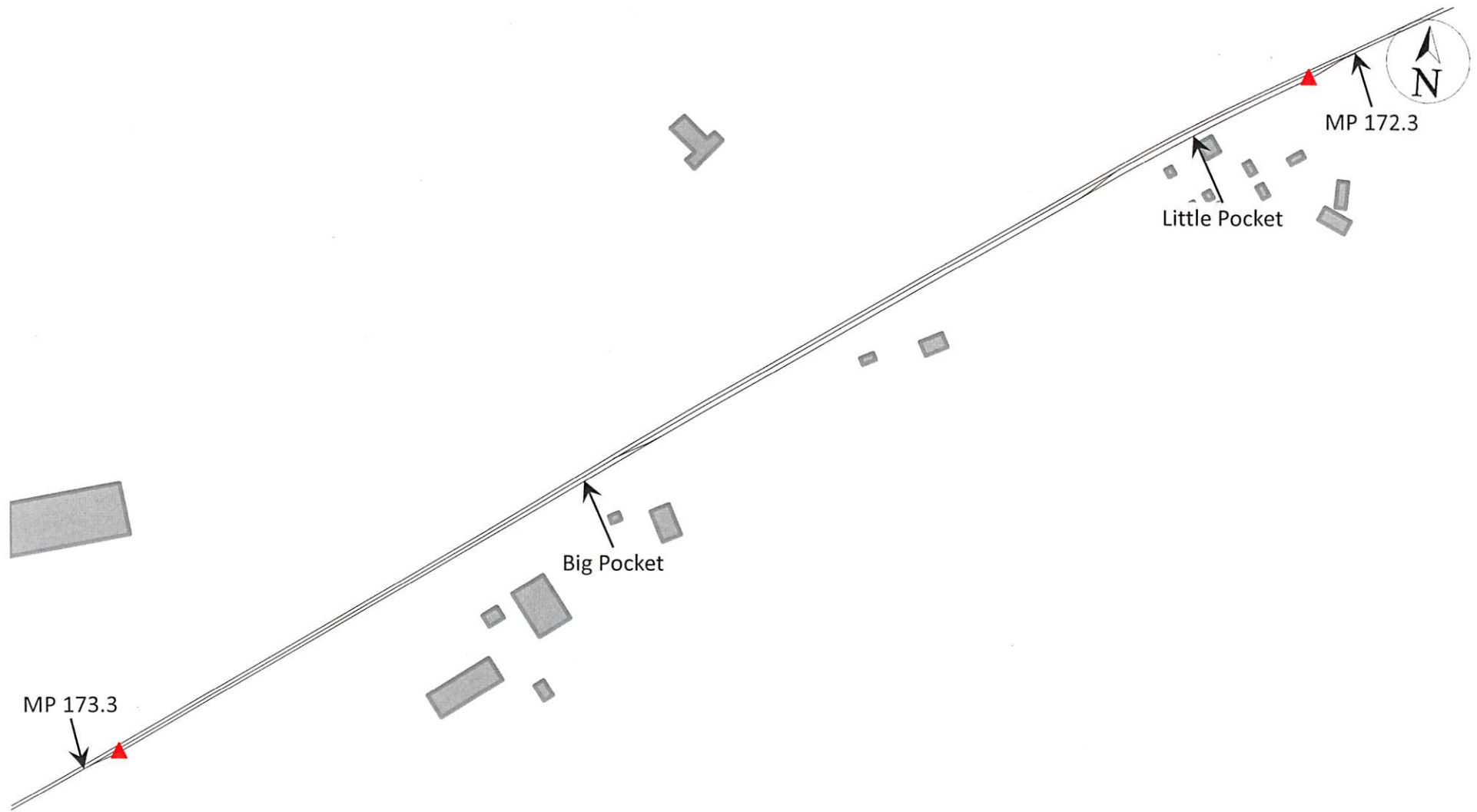
### **Physical Characteristics**

The graphics on the following pages provide an overhead view and a one-line diagram of the track layout and contain the following physical characteristics:

- MP 173.3 and MP 172.3
- Two Derails
- Big Pocket and Little Pocket

# NS Industry Reference Guide

AL-A533-Big Pocket



= Derail	= Industry Gate	= Close Clearance	= Lead Line	= Industry Track
<b>For Reference Only</b>				

Version: January 17, 2018

**Division:** Alabama Division

**Control Station:** A533

**Class Code:**

**Industry Name:** Little Pocket

**Version:** January 17, 2018

### Physical Characteristics

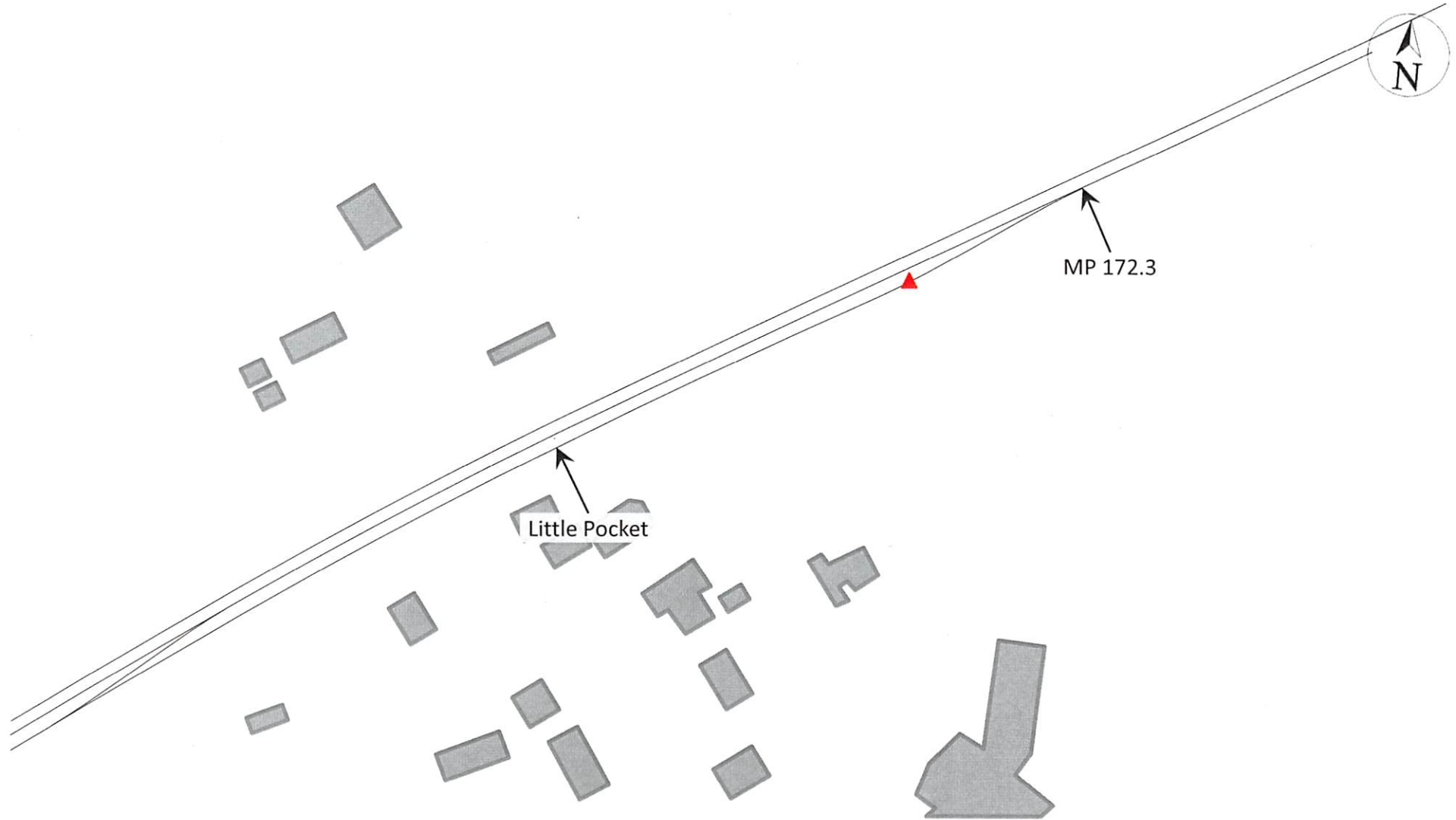
The graphics on the following pages provide an overhead view and a one-line diagram of the track layout and contain the following physical characteristics:

- MP 172.3
- Derail
- Little Pocket



# NS Industry Reference Guide

AL-A533-Little Pocket



= Derail	= Industry Gate	= Close Clearance	= Lead Line	= Industry Track
<b>For Reference Only</b>				

Version: January 17, 2018

**Division:** Alabama Division

**Control Station:** A533

**Class Code:**

**Industry Name:** Hixon Siding

**Version:** January 17, 2018

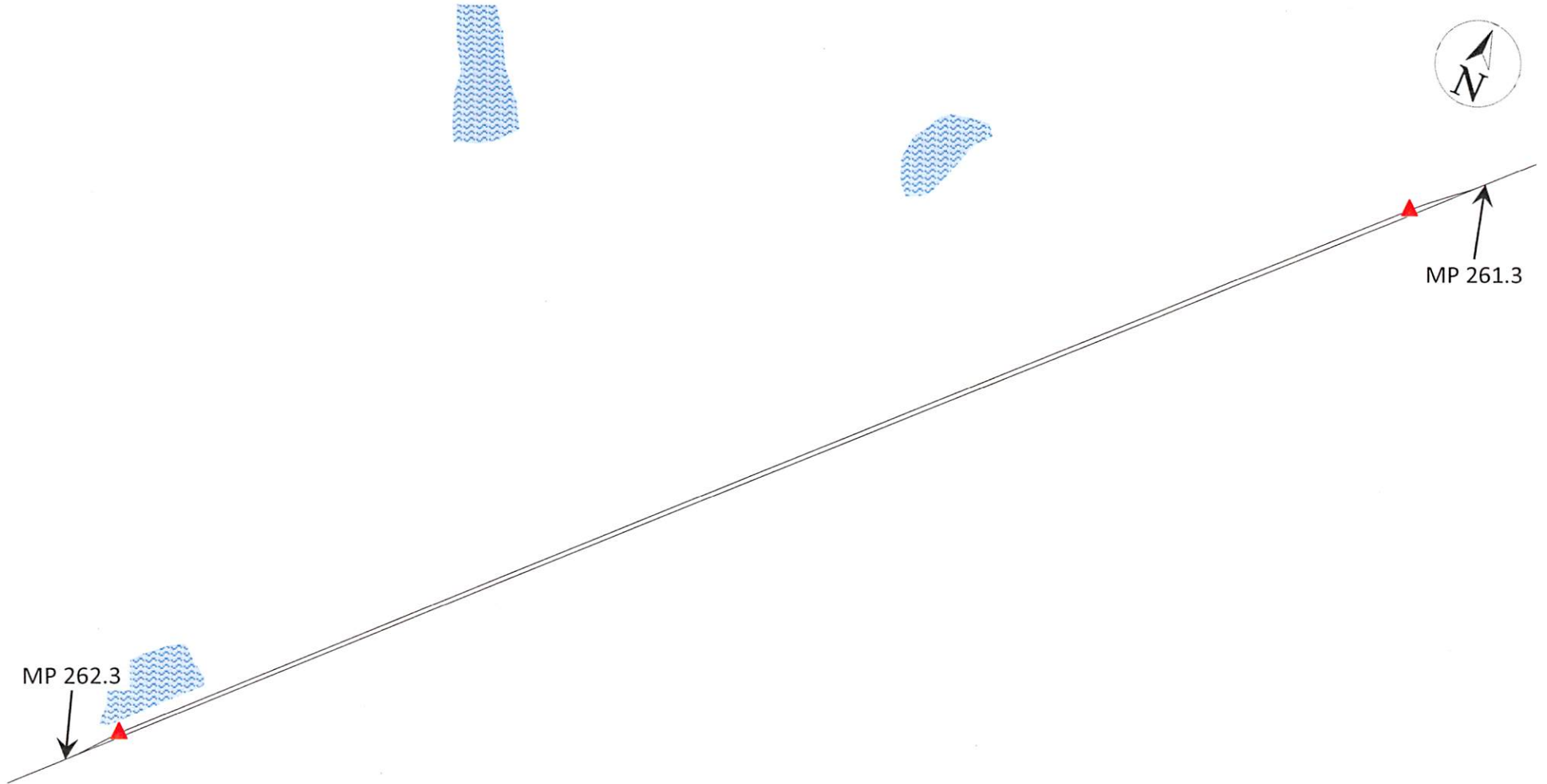
## **Physical Characteristics**




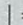

The graphics on the following pages provide an overhead view and a one-line diagram of the track layout and contain the following physical characteristics:

- MP 261.3 and MP 262.3
- Two Derails

# NS Industry Reference Guide

AL-A533-Hixon Siding



 = Derail	 = Industry Gate	 = Close Clearance	 = Lead Line	 = Industry Track
<b>For Reference Only</b>				

Version: January 17, 2018

TUSCALOOSA YARD

